

[<Back](#) [Print](#)

Southern California Women's Caucus for Art

December 2006

All—

A special thank you to Liinda Carlson, who created an amazing 30th Birthday Celebration for our many members and community friends who joined us on Sunday, November 12th. Ruth Weisberg, our founding president, presented the chapter and the Rutgers archive three copies of "Many Voices, Many Visions", a poster created for the 1985 WCA conference in LA based on one of her drawings. Marilyn Duzy, who succeeded Ruth as President, followed by Lynn Creighton, Lindo Jo Russell, Lucy Blake-Elahi, Sandra Rowe, Myra Gantman, Ada Brown, Ann Isolde and myself were each honored for taking on the challenges of leadership on behalf of the caucus .

Advisory Board members Nancy Macko and June Wayne (along with Ruth Weisberg) each spoke briefly to the group. Nancy has a major retrospective of her work opening on Dec. 17th at Barnsdall (see below) and June aptly suggested in a video interview that we focus our attention on what's needed in a forward-looking mode when considering our accomplishments.

To that end, I'd like to offer appreciation this month to Libby (Elizabeth) Hartigan, who serves as 2nd VP in charge of fundraising. Libby wrote the Peter Norton Family Foundation grant that we received for the catalog. Writing grants requires anticipating the future with articulation of a vision, coupled with concrete (yet, flexible) plans to achieve those goals and measurement modes to ensure accountability. Not a bad way to plot our course!

Best,
Sandra Mueller
SCWCA President

IN THIS ISSUE:

- Karen Carson Studio Visit on Sat. 1/13, 1:30 PM in Venice
- Nancy Macko's 'Hive Universe' Opening on Sun, 12/17
- Happy 30th Birthday, SCWCA!
- Next Eco Meeting is Sunday, 1/7
- In the Community: Member News, Exhibits & Announcements
- WOMEN AROUND TOWN by Suvan Geer

Karen Carson Studio Visit on Sat. 1/13, 1:30 PM in Venice



This artist studio visit with KAREN CARSON will provide a behind-the-scenes experience of her richly creative life. You will see objects from other cultures and images by other artists that inspire her. She'll talk with you about her past work and give you a preview of some wind landscapes with flying horses she is preparing for an exhibition at Rosamund Felsen Gallery in April 2007. Whether using symbols, caricature or even illusionistic space, her works hook viewers into an urgent engagement with the world at large. You will come to understand what she means when she says, "Art is the most profound reminder of what it means to be alive."

Registration deadline is January 5, 2007. The fee is \$10 for 2007 renewed members and \$20 for others. Registration at the door is an additional \$5 Make your check payable to SCWCA and mail to 2100 N. Main Street, #A5, Los Angeles, CA 90031. Contact annisolde@scwca.org or call (310) 315-0840 for more information.

KAREN CARSON is one of the artists who will be included in *Multiple Vantage Points: Southern California Women Artists, 1980–2006*, scheduled to be on view at the Los Angeles Municipal Art Gallery from February 25–April 15, 2007.

Nancy Macko's 'Hive Universe' Opening on Sun, 12/17

Monthly Meeting - Sun. 1/7/07@ 9:30 AM at the SCWCA Office/Gallery. Email [Sandra Mueller](#) for details.

EcoArtMeeting - Sun. 1/7/07@ 9:30 AM at Linda Lundell's studio. Email [Linda Lundell](#) for details.

Karen Carson Studio Visit - Sat. 1/13/07@ 1:30 PM in Venice. Email [Ann Isolde](#) for details.

F Words — Multigenerational Conversation - Sat. 2/3/07@ 1:30 PM. Email [Ann Isolde](#) for details.

Monthly Meeting - Sun. 2/4/07@ 9:30 AM at the SCWCA Office/Gallery. Email [Sandra Mueller](#) for details.

EcoArtMeeting - Sun. 2/4/07@ 9:30 AM at Linda Lundell's studio. Email [Linda Lundell](#) for details.

Feminist Art Project Panels - Sat. 2/17/07@ in New York City.

WCA National Conference & Lifetime Achievement Awards - Sun 2/18/07@ Barnard College in New York City.

SCWCA.ORG Links...

[Renew or Join Now](#)[Multiple Vantage Points Exhibition](#)[Recent Programs](#)[Board & Committees](#)

SOUTHERN CALIFORNIA

Artist Nancy Macko, who serves on our SCWCA Advisory Board and is on faculty at Scripps College, solo exhibition at the Los Angeles Municipal Art Gallery will run from 12/15/06 to 2/04/07. *Hive Universe* is the most comprehensive examination of Macko's work to date spans traditional and digital media including prints, video, and mixed media works on wood panels. This exhibition is organized and curated by Scott Canty and accompanied by a full color catalogue with essays by SCWCA member Gloria Orenstein along with Mary Kay Lombino, Karin Breuer, Mary MacNaughton and *WACK!* Curator, Connie Butler. A Conversation with the Artist is scheduled on Friday, 1/5.



Women's Caucus
for Art

Join our mailing list!

Join

"Conceptually my work finds its greatest resonance with feminist utopian novels that challenge basic assumptions about power between the genders and imagine women-centered worlds in which strong and powerful women live autonomously without fear of the restrictions and consequences placed upon them by today's society," Macko explains.

Happy 30th Birthday, SCWCA!



More than sixty members and friends joined in our 30th Birthday celebration. Pictured above: Libby Hartigan, SCWCA 2nd VP (l) and Ruth Weisberg (r) at SCWCA holding the "Many Voices / Many Visions" poster (based on a drawing by Ruth) that was designed by Deane Swick for the 1985 WCA Conference in Los Angeles. Two copies were sent to the Rutgers WCA Archive as well. Ruth also offered the birthday toast.

Next Eco Meeting is Sunday, 1/7

The January meeting will be at Linda Lundell's studio. In December, artists **Hani Shafran, France White, Ulla Barr, Ann Islole, and Gaby Sincich** shared their work and the group viewed a Bioneers video by Paul Hawkins and continued planning for their 2007 April EcoArt show.

In the Community: Member News, Exhibits & Announcements

MEMBER NEWS: Member **Vibi Chamberlin's** altar addressed the destruction of the rain forest by "gross commercialization" was featured at the annual Self Help Graphics Day of the Dead exhibition in November. Member **NATASH KOSTAN** is showing this month in a two person exhibition at the Harvest Gallery in Glendale, runs 12/1-12/17) and in "Fresh View" at H. Kazan Fine Arts, runs 12/2-1/15/07. www.hkazanfinearts.com.

Be sure to send your member news to enews@scwca.org! Please write it up in the format above and include the url of the gallery where you're showing. Web-ready jpegs are eligible for publication.

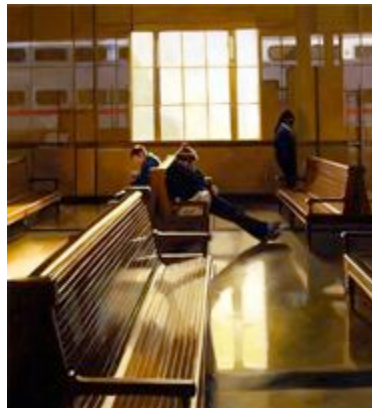
CALLS FOR ARTISTS: [WCA New Media Caucus](#) is organizing the **Fourth Annual Video Shorts Festival**, deadline: 12/10. [Los Angeles Printmaking Society 19th National Exhibition](#), deadline: 2/10/07. **WOMAN II** in March 2007 from [NoHo](#), deadline 12/20. The [Brand Library Art Galleries](#) is accepting submissions from artists, artist groups and curators for 2008 exhibitions, deadline: 1/31/07.

WOMEN AROUND TOWN by Suvan Geer

"Knit Cap" by **Patricia Chidlaw**

Women artists are more visible than ever before, but as statistics from a few of the ongoing group exhibitions make clear, it's not yet a level playing field.

The 2006 California Biennial, organized by curators Elizabeth Armstrong and Karen Moss at the Orange County Museum of Art with help from curator Rita Gonzalez has thirty one artists from all over the world, but only twelve are women. To 12/31. www.ocma.net



Out of nearly 300 submissions and thirty eight artists and collectives selected, only ten are women in this year's OsCene: Contemporary Art and Culture in OC exhibit. Laguna Art Museum. To 1/21. www.lagunaartmuseum.org

The Los Angeles County Museum of Art's, Magritte and Contemporary Art: The Treachery of Images, co-curated by Stephanie Barron, creates interesting parallels between Magritte's word and image paintings and work of thirty one contemporary conceptual based artists, but only four of those are women. To 3/4. www.lacma.org

That said this holiday column is dedicated to all the women artists who stay grounded on art's sloping field, manage to keep their footing and make strong work. Here are some highlights:

At SCA Project Gallery, **Tomoko Suzuki** and **Danielle Segura** present work done collaboratively on one image; while **Shari Wasson** turns collages of wool and blind lamb's heads into metaphysical drawings. To 12/2. www.scagallery.com

The long ink jet panoramic land and seascapes of **Rebeca Mendez** at ANDLAB are meditations on nature's beauty but color-coded to suggest the public's growing sense of impending environmental threat. To 12/7. www.ANDLAB.com/art

Camille Rose Garcia's new paintings explore feelings of claustrophobic fear and survival in a world where childhood optimism and cartoon fantasy have run aground in a dystopia akin to Dante's underworld. At Merry Karnowsky Gallery. To 12/9. www.mkgallery.com

Joining and stacking chunks of raw and milled wood with found furniture

Coleen Sterritt's new sculptures explore the dynamics of natural forms pressed into domestic service with an uneasy grace, humor and a visceral appreciation for texture and surface. At d.e.n contemporary. To 12/16. info@dencontemporaryart.com

Embroidered reproductions of works by disparate painters like Bridget Riley and Henri Matisse make **Elaine Reichel's** conceptual take on art's image indebtedness, doubled meaning and mass production engaging. At Shoshana Wayne. To 12/16. www.shoshanawayne.com

Glowing assemblage paintings by **Sylvia Glass** are paired with the haunting dream narrative sculptures of **Annette Bird** at Jan Baum Gallery. To 12/20. www.janbaum.com

De/Feat is the double twist title of **Sara Greenberger Rafferty's** alternately funny and provocatively disturbing video of the artist earnestly trying to tie herself in a restraining straightjacket. At Sandroni.Rey. To 12/22. www.sandronirey.com

Patricia Chidlaw's oil paintings of roadside sites exude a deep nostalgia for America's simpler urban past. At Terrence Rogers Fine Art. To 12/23. www.TROGART.com

SUBMISSIONS:

Members are welcome to forward news items, 'member news' items (limit is 4 times a year) and upcoming show opportunities to membernews@scwca.org. Items must be received by the 15th of the month preceding publication. JPEG images will be published on a space available basis and must include title, size etc. Please include urls if your show is listed on a web site and follow the format as published above.

About the SCWCA Updates

Please add enews@scwca.org to your address book. If you can't see the images or links, click on 'Enable Links and Images' in AOL or 'Download pictures' in Outlook to enable those features.

email: enews@scwca.org
 phone & fax: 323-222-2112
 web: <http://www.scwca.org>

EcoArt Tips:

[EcoArts Tips are now online at scwca.org](http://www.scwca.org)

[Forward email](#)

✉ **SafeUnsubscribe®**

This email was sent to enews@scwca.org, by enews@scwca.org
[Update Profile/Email Address](#) | Instant removal with [SafeUnsubscribe™](#) |
[Privacy Policy](#).

Email Marketing by



Southern California Womens Caucus for Art | 2100 N. Main St. #A-5 | Los Angeles | CA | 90031