

[<Back](#) [Print](#)

Southern California Women's Caucus for Art

October 2007

Friends - I would encourage each SCWCA member to join in our annual fall gathering on Sunday, October 14th. We've had a most active year hosting a major exhibition and have been treated to an amazing feast of exhibitions, lectures and symposia featuring women artists.

As an organization, we're at a new threshold. We've enhanced our standing with these accomplishments at the same time, we're challenged to find a more realistic pace of activity, Which means it is crucial that we gather now to re-focus our involvements as a community of women artists.

Years back when I was producing interactive media, I worked briefly with Howard Rheingold, one of the web's social pioneers. He had it right when he said: "**What it is, is up to us.**"

We're each part of that us - so, show up and speak up. My personal goal in taking on the Presidency one more year is to shift the organization even more strongly into a collaborative, members-make-it-happen mode while at the same time meeting our nonprofit governance requirements. So, next month this column will be written by one of my board colleagues.

Do come on Sun. the 14th & bring lots to share - your ideas, your inspirations and even a little food!

Sandra Mueller

IN THIS ISSUE:

- SCWCA CALENDAR
- SCWCA COMMUNITY MEETING - Sunday, Oct.14, 2-5 PM
- ART MATTERS Discussion & Potluck on Sun. 10/28, 6-9 PM
- Creating Compelling Websites for Artists on Sat. 11/17 @ 1:30 PM
- IN THE COMMUNITY: Member News, Artist Calls, Lectures
- WOMEN AROUND TOWN by Suvan Geer

SCWCA COMMUNITY MEETING - Sunday, Oct.14, 2-5 PM



Sandra Mueller

We'll meet on Sunday, Oct. 14th for our annual Plan Fest and to elect the 2008 leadership team. Candidates are: **SANDRA MUELLER** for President, **KATHERINE KEAN** for Treasurer and **LIBBY HARTIGAN** for Executive Secretary. They will serve along with the appointed directors for the next year as the SCWCA Board of Directors.



Katherine Kean

We will be honoring several long standing members of the board, who are retiring and welcoming others who are stepping forward. If working with the board appeals to you, this is a great time to come and learn more.



Libby Hartigan

Our primary activity will be PlanFest III. This is an open forum meeting when we decide together what we most want to happen in 2008 and beyond. Many of our ongoing groups, such as EcoArts Art Buddy and ArtShare, grew out of the PlanFest as did the Gallery Celebration Project that ran concurrent with WACK! and MULTIPLE VANTAGE POINTS! exhibition. So we know this collaborative process yields great ideas that come to fruition.

Please bring an appetizer to share with others - drinks will be provided.

SCWCA CALENDAR

SCWCA ANNUAL MEETING, ELECTIONS & PLAN FEST on Sun. 10/14 at 2 PM at the 1-5 Gallery.

ART MATTERS on Sun. 10/28 meets in Westwood for discussion and potluck dinner.

SCWCA Board Meeting on Sun. 11/4 at 9:30 AM the SCWCA Office / Gallery at the Brewery.

WEB SITES FOR ARTISTS workshop with Ruth Ann Anderson on Sat. 11/15 from 1:30 - 3:30 PM at the Santa Monica Library

SCWCA.ORG Links...

[Renew or Join Now](#)[Multiple Vantage Points Exhibition](#)[Recent Programs](#)[Board & Committees](#)

Join our mailing list!

RSVP to cathysalser@scwca.org by Mon., 10/8 and let her know what appetizer you plan to bring. All members are encouraged to attend even if you sent in a proxy ballot - just abstain from voting. Location: I-5 Gallery at The Brewery, 2100 N. Main Street - #A9, Los Angeles, CA 90031.

ART MATTERS Discussion & Potluck on Sun. 10/28, 6-9 PM



Rosa Parks sculpture by Artis Lane at the California African American Museum.

Join in the ART MATTERS potluck supper and lively discussion of current exhibitions and "Works By Women: From the Heart" video with interviews with ten women artists including Lynda Benglis. Shows to view in advance: "Body Double" (thru 10/13 - photography and video by 16 emerging female artists who use their own image) at Cal State L.A. Luckman Gallery and "A Woman's Journey: The Life and Work of Artis Lane" (thru 3/2/08) plus "Blacks In And Out of the Box" (thru 12/30) at the California African American Museum in Exposition Park.

Meeting is at the Westwood home of member FREYDA MILLER. **RSVP to annisolde@scwca.org** or call (310) 315-0840 to receive directions. **All members are encouraged to attend** and it's fine to come even if you haven't seen all the suggested exhibitions.

Creating Compelling Websites for Artists on Sat. 11/17 @ 1:30 PM

Ruth Ann Anderson at the Santa Monica Public Library

Ruth Ann Anderson, author of *The Art and Technology of Web Design* will talk about the importance of powerful images, engaging color schemes, compelling content, clear navigation and more in creating a compelling website! She'll also critique selected artists' websites online to highlight what works and what doesn't.



If you're looking for tips and critiques to help you evaluate the success of your existing artist's website or want to learn what to ask from a designer you hire to create one, this is the workshop for you.

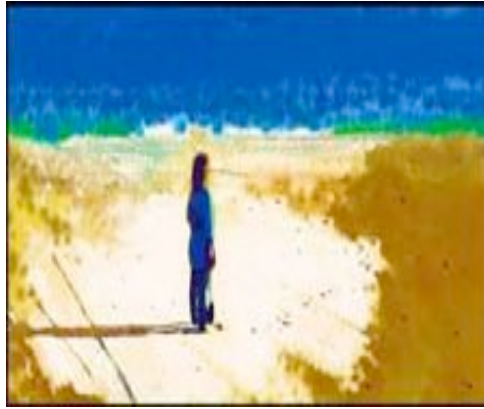
Registration deadline is Wed. 11/14. Fee: \$35 / \$20 members. \$5 extra at the door. Make checks payable to SCWCA and mail to Ann Isolde, 1127 16th St., Apt. F, Santa Monica, CA 90403. Contact annisolde@scwca.org or call (310) 315-0840 for more information.

IN THE COMMUNITY: Member News, Artist Calls, Lectures

*One.. an altered photograph by
Cynthia Friedlob.*

MEMBER NEWS: Member **PENNY McELROY** has work in the faculty show at the [University of Redlands' Peppers Art Gallery](#).

Member **CYNTHIA FRIEDLOB** is in "Secrets & Confessions" at the [Brand Gallery](#). Juror: Lita Albuquerque. Runs 10/6-11/16, opens 10/6.



Members **FRANCE WHITE**, **DEBORAH THOMAS** and **JULIE KORNBLUM** are in The Art and Science of Climate Changes at the Brandstater Gallery at [La Sierra University](#). Runs 10/8-11/1, opens 10/8. Members J. **NATASHA KOSTAN** and **LAUNA D. ROMORFF** are showing in "TRANSITIONS" at [H. Kazan Fine Arts Gallery](#), 10/13-11/17, opens 10/13.

PUBLIC ART: P.L.A.C.E. PROJECT (Public and Local Artists Creating Environments) seeking applications for outdoor art installation for their Spring 2008 ArtWalk and future artwalks. Contact: lzaid@ci.ventura.ca.us or (805) 658-4736. Deadline: 11/6. [San Diego County Regional Airport Authority](#) invites artists to submit qualifications (RFQ) for the San Diego International Airport. Deadline: 11/16.

ARTIST CALLS: Los Angeles Art Association's OPEN SHOW 2007 with LACMA's Howard N. Fox as juror. Runs 12/8-1/11. Deadline: 10/13 ARTISTS WANTED to display work and answer student questions for a **High School Art Celebration Day** on Oct. 26th in Burbank. Email juliegrene@hotmail.com for details.

LECTURES / WORKSHOPS: [American Art Controversies](#) on 10/9 at 3 PM at the Getty Center. Michael Kammen, author of *Visual Shock*, will give special attention to nudity and sexuality in art, new issues raised by public art and sculpture beginning in the mid-1960s and conclude with feminist issues in the 1970s. RSVP required.

How to Become a Teaching Artist on 10/3 and The Business of Art on 11/14 at the [Long Beach Historical Society](#). 5:30 - 7:30 pm. Cost: \$10. RSVP to Kenton Haleem, kenton@artslb.org.

WOMEN AROUND TOWN by Suvan Geer



*String Figures, 2002 by
Hadiya Finley, figerglass.*

Undermining the Hallmark perfection constructed in family albums and old home movies by carefully inserting texts that touch on the uncomfortable reality of divorce and

estrangement, artist **Michele Jaquis** turns her family history into a subversive deconstruction of societal appearances and the falsity of

photographic images. Also showing at At LAAA/Gallery 825 are the strange walking figures of **Hadiya Finley** that examine pedestrian movement. To 10/5. www.laaa.org

The ethereal photo collages of **Anna Friesen's** 'Universe' mix her old photographs and drawings with soot and transparency at SCA Project Gallery. Also showing are the sprawling triptych photo collage panels of **Patricia Hagerman** that make an uncomfortable wallpaper montage of social, environmental and political images into a unrelenting parade of destruction and pain. To 10/6. www.scagallery.com

Ceramicist **Karen Kobitz** makes a visit to Azerbaijan into an installation, 'Facing East', with rugs and embossed clay artifacts exploring collaboration and the cultural signifiers of ornamentation and pattern. At L2Kontemporary. To 10/6. www.L2kontemporary.com

Rio Hondo College presents **Deborah Koenker's** installation poetically confronting the loss and despair surrounding the hundreds of unsolved cases of missing and murdered women in Ciudad Juarez, Mexico. To 10/10. www.riohondocollege.info

Gale Antokal's latest soft, faintly nostalgic images of loss and transience made from chalk, flour, graphite and ash are 'The Messengers, at Couturier Gallery. To 10/13. www.couturiergallery.com

Marnie Weber, Vanessa Chow, Tia Pulitzer, Pentti Monkkonen and **Amy Sarkisian** are the women sculptors whose intriguing, playful and thoughtful works are included in Angles Gallery's 'LA Bodies: Figuration in Sculpture'. To 10/13. www.anglesgallery.com

'Body Double' is an intriguing show of photographs and videos created by sixteen emerging female artists who incorporate the use of their own image in performative or staged acts to explore various psychological circumstances. At Luckman Gallery to 10/13. www.luckmanarts.org

Lana Shuttleworth cuts up highway traffic cones and makes sprawling panel images and critters with attitude out of the recycled plastic at Bandini Art. To 10/20. www.bandiniart.com

A must see are the simple vertical strips of LED's flickering in an empty room that blossom and hover in thin air as glowing colored words yet are visible only when you turn your head. It's **Jessica Bronson's** participatory exploration of perception and spectatorship. At Pomona College Museum of Art to 10/21. www.pomona.edu/museum

Kelly Nipper's austere works based in photography, video, and performance study motion's nuances of time, space, and dimension at Anna Helwing Gallery to 10/27. www.annahelwinggallery.com

'Inland Emperors' is an exhibition celebrating the longevity and innovative artistic activity by 12 of the regions best known artists. The three women highlighted are photographers **Sant Khalsa** and **Susan Rankaitis**, and mixed media artist **Sandra Rowe**. At dba256 Gallery to 10/27. www.dba256.com

Delicate drawings and paintings that mix myth with geology and archery with fertility cults are by **Caroline Maxwell** are at Jan Baum to 10/27. <http://janbaum.com>

Fifteen female sculptors from across the U.S. who use the figure to express their ideas make up 'Form and Imagination: Women Ceramic Sculptors'; a curatorial attempt to ask the question, 'Do women bring a unique perspective to figurative sculpture?' At The American Museum of Ceramic Art, to 11/24. www.ceramicmuseum.org

100 handmade butterflies with the heads of famous women and scissors

made of porcelain with blades that mutate into knots and other unexpected forms make **Elsa Mora's** multi-media objects reflecting on female experience and social expectations worth a visit. At Couturier Gallery 10/20 to 12/1. www.couturiergallery.com

'Humor Us' features seven women out of twenty Asian American artists with ties to Southern California who engage in strategies of absurdity, parody, tricks and satire in their artistic practice. It's an examination of humor and its links to and subversions of race and identity. At Los Angeles Municipal Art Gallery to 12/30. www.humorous.net

Highly respected German artist **Cosima Von Bonin's** eclectic works at MOCA use wool fabric, sewing, and iconic stuffed toys to examine the hierarchies of power and collaboration that she shares as an artist, a woman and a member of a diverse creative community. Her work explores ideas of play and indoctrination, structure and improvisation, cultural and gender representations as well as structures of social power. To 1/7. www.amoca.org

SUBMISSIONS:

Members are welcome to forward news items, 'member news' items (limit is 4 times a year) and upcoming show opportunities to enews@scwca.org. Items must be received by the 15th of the month preceding publication. JPEG images will be published on a space available basis and must include title, size etc. Please include urls if your show is listed on a web site and follow the format as published above.

About the SCWCA Updates

Please add enews@scwca.org to your address book. If you can't see the images or links, click on 'Enable Links and Images' in AOL or 'Download pictures' in Outlook to enable those features.

email: enews@scwca.org
phone & fax: 323-222-2112
web: <http://www.scwca.org>

CARBON OFFSETTING: Air traffic is the fastest-growing source of greenhouse-gas emissions, so when you do fly, consult a carbon-offsetting organization such as Climate Care to "carbon-offset" your journey. Climate Care determines your flight's emissions and the cost to offset the CO 2. For example, to offset the round-trip flight between New York and Los Angeles, you would pay about \$10 to Climate Care, which invests in forestry and energy-efficiency projects. For more information, visit climatecare.org.

EcoArt Tips:

SWITCH TO GREEN POWER: The leading cause of industrial air pollution is electricity production. According to the American Lung Association, more than 50,000 Americans die each year from air-pollution-related causes. If available, get your electricity from renewable energy sources such as wind, sun, water, and biomass, all of which generate electricity with fewer environmental impacts. With utility companies in 35 states offering green-power pricing plans, around half of all electricity consumers could buy green, yet only half a million do. Does green power cost more? Yes, but barely. For example, New York's Con Edison charges an additional one-half cent per kilowatt-hour for its green-power products. To see if your energy providers offers green-power options, visit eere.energy.gov/greenpower.

Thanks to **Linda Lundell, leader of the EcoArt group** for sharing these tips that originated with Henry Porter of the Alliance For Sustainable Communities. Linda suggests doing a few at a time at a pace that works for you.

[Forward email](#)

✉ **SafeUnsubscribe®**

This email was sent to enews@scwca.org, by enews@scwca.org
[Update Profile/Email Address](#) | Instant removal with [SafeUnsubscribe™](#) |
[Privacy Policy](#).

Email Marketing by



Southern California Womens Caucus for Art | 2100 N. Main St. #A-5 | Los Angeles | CA | 90031