

## Southern California Women's Caucus for Art

JULY 2008

### PARTICIPATION MATTERS!

It is ever so heartening as more and more members - long term and new - step into leadership and involvement roles. We welcome EcoArts leader **JULIE KORNBLUM** onto the SCWCA board and offer special thanks to **SUSAN KARHROODY** for stepping forward as our new membership chair, **SHELLEY GAZIN** for representing SCWCA at LA Arts Advocacy meetings and **DIANE DESTINY and CINDY RINNE** for ongoing work on programs. Plus, my eNEWS colleagues -- **SUVAN GEER, LAURE MCKINNON and LORI MINICK to name just a few.**

It is my experience that getting involved often translates into adding new elements to your artwork - believe me, our artist members each have unique perspectives to share - and it also breaks the isolation of the sole studio practitioner.

We're hosting a "Mini-Meet Up" at the start of our July business session on Sunday, 7/13. This is a great chance to share what's happening in your art life and to meet fellow members. Board member **CATHY SALSER** is generously hosting in the Venice training studios of [A Window Between Worlds](#). Please send an email to [sandramueller@scwca.org](mailto:sandramueller@scwca.org) to say you're coming.

PS - And, it's very, very heartening to have such a lengthy roster of shows in the July member news area.

### IN THIS ISSUE:

- ARTISTS REGISTRY UPDATE
- Erika Rothenberg Studio Tour, Sat. 7/19, 1:30 PM
- IN THE COMMUNITY: Member News, Workshops, Artist Calls
- WOMEN AROUND TOWN by Suvan Geer

### Erika Rothenberg Studio Tour, Sat. 7/19, 1:30 PM



*Erika Rothenberg in her studio with works in progress*

Visit the Culver City studio of one of LA's "best and most prickly artists!"

--Clayton Campbell, *FlashArt*

Rothenberg makes art that takes a variety of forms-painting, sculpture, photography, multiform installations and large-scale public works. She frequently uses words as well as images and often re-imagines iconic items in U.S. culture.

Tour will include discussion, digital presentation and studio art viewing.

Limited spaces available.

**Registration deadline: Wed. 7/16.** Fees: \$10 members; \$20 others. Make checks out to SCWCA and mail to Ann Isolde, 1127 16th St., #F, Santa Monica, 90403. More info: [annisolde@scwca.org](mailto:annisolde@scwca.org) or 310-315-0840.

[More about Erika Rothenberg](#)

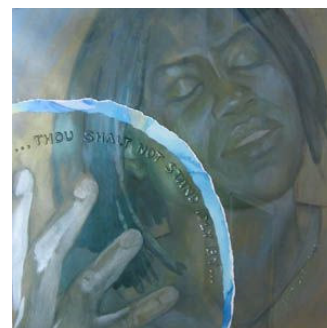
### IN THE COMMUNITY: Member News, Workshops, Artist Calls

**MEMBER NEWS: JULIE KORNBLUM** (see image on right) is in three shows in Florida: Designing Weavers Sideshow at [Art Center Manatee](#) in Bradenton, FL from 6/12- 7/5 and "River of Grass" at the Handweavers Guild of America Convergence conference in Tampa, 6/25-28. Julie also has a solo show scheduled at Brooker Creek Preserve Environmental Education Center in November and December.

**MYRA GANTMAN** is in a group show, "Oceano Romantico," at Los Angeles International Airport, Terminal One, from 6/9 to 10/19. **KIM HEJNA** is showing prints in "Six Past Midnight" and "Printed Matters" at the Cal State Channel Islands Art Center, 6/28-8/14.



### ARTISTS REGISTRY UPDATE



'Not' appears on ["Cathy Salsers SCWCA Artists' Registry](#) page.

Congratulations to the more than 50 members who now have their pages online. Contact [annisolde@scwca.org](mailto:annisolde@scwca.org) to learn how you can join this exciting online opportunity.

### SCWCA CALENDAR:

**SCWCA Business Meeting on Sun. 7/13** at 9:30 am at AWB studios. 710 4th Ave, #5 in Venice (just a few blocks from the Rose cafe). All members welcome!

**SCWCA EcoArts group is hosting a summer social gathering on Sun. 7/20** in the afternoon. Email [juliekornblum@scwca.org](mailto:juliekornblum@scwca.org) for details.

**Erica Rothenberg Studio Visit on Sat. 7/19** .

National **WCA Summer board meeting**, Washington, DC from Fri. 7/25-Sun. 7/27.

**SCWCA Business Meeting on Sun. 8/10** at 10 am at the Brewery. All members welcome!

[Calendar listings for Southland Art Museums](#)

### SCWCA.ORG Links...

[Join Now](#)

[SCWCA Artists Registry](#)

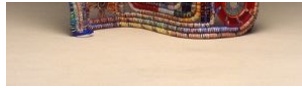
[Recent Programs](#)

[National WCA Website](#)

[Getting Involved -- Committees and Board](#)

Artwork by *Merrilyn Duzy & Norma Jean Squires*

Member **ANNEMARIE RAWLINSON's** "Hidden Gifts" piece featuring a modern-day Trojan Horse, was accepted into the invitational exhibition of "Spirit of the Horse" at the Palos Verdes Art Center, 6/6-7/6. Member **SUSAN KARHROODY** is showing work in the The President's Show of the American Ceramic Society at the Burbank Creative Arts Center. Opens 7/11, 7-9 pm.



Members **ULLA BARR, CINDY RINNE and CHERYL BOOKOUT** are featured in the "Strength & Vulnerability Exhibition" at [2nd City Council](#) gallery in Long Beach.



Members **MERRILYN DUZY and NORMA JEAN SQUIRES**, who are members of the Lantern of the East Los Angeles (LELA), are included in the LELA International exhibit at the Modern Art Museum in Yerevan, Armenia, 7/7-7/31 and also in "The Peace Show" in Nagasaki, Japan from 7/1 -7/31. 1st to July 31st. Norma Jean also has work in "Different and Co-exist" at the ASTO Museum of Art in Wrightwood, California from 7/5 to 7/25 and in the "Oceano Romantico" show at LAX.



**CALLS FOR ENTRIES:** D.J. Hall is the juror for [Tag Gallery's 2008 California Open Exhibit](#). Deadline: 7/11. [DAC Gallery](#) in downtown Los Angeles is hosting an early fall show. Deadline: 8/1. Show runs 9/2-9/13. Call for Entries from printmakers for *Left, Right and Center*, a collaboration with The Art of Democracy, at the [Old Town Gallery in Tustin](#). Curated by Patrick Merrill. No entry fee. Deadline: 8/15. [2nd City Council](#) is hosting "Visual Literacy" Visual Literacy." Deadline: 8/10. Skylark Media Group & Fabrik Magazine announce their 2008/2009 [SKYLARK PRIZE](#). Entry deadline: 9/1.

**WORKSHOPS:** Member **CYNTHIA FRIEDLOB** is conducting her "Un-Clutter Your Studio, Un-Clutter Your Life" workshop on Sat, 7/26 at the Creative Arts Center gallery in Burbank. Call (818) 238-5397 to register. **SANDRA MUELLER** is offering her ["Gratitude Mandalas" Workshop](#) for women at AWBW on Sat. 8/9 in Venice.

Claremont Art Museum, 6/28

**SUBMISSIONS:** Follow date and listing format above and include url for gallery and images. Send to [enews@scwca.org](mailto:enews@scwca.org) by 15th of month preceding publication. Web-ready JPEG images published on space available basis.



Member Olivia Sanchez-Brown



Members Darlene Mellein, Pam Loudon and Laura Heins-Jergens conversing with WCA national president Marilyn Hayes.



Members Cindy Rinne, Penny McElroy & Kat Grossman

**WOMEN AROUND TOWN by Suvan Geer**



**MOCA** presents, 'Measuring Your Own Grave' paintings (image left) by **Marlene Dumas** of troubling psychological themes showing women in states of vulnerability and death. 6/22 to 9/22. Also showing are the totemic wallpaper and stick sculpture of **Lisa Lapinski** that resonate with narrative meaning derived from philosophical, historical, and psychological sources. 6/22 to 8/25.

Work by **Diane Gamboa and Patssi**



**Valdez** helps set the tone for *Vexing: Female Voices from East L.A. Punk* show on the music and scene of the late 70s at the new [Claremont Art](#)

[Museum](#), with **Shizu Saldamando** and **Sandra de la Loza**, photographer **Chris TV** and performance group **Butchialis de Panochtitlan** amplified by the younger generation. Ends 8/31.

The hedges surrounding **Astrid Preston's** home also fill her oil on canvas paintings at Craig Krull Gallery. The lush images play with staining, photo-based overexposure and obsessive detailed observation that parcel nature's incessant growth into tight blocks of jam packed, light drenched stillness. To 7/12. [www.artnet.com/ckrull.html](http://www.artnet.com/ckrull.html)

Of the fifteen 2008 COLA Fellowship grants, nine went to visual artists. Initiated in 1996, as part of the City of Los Angeles Cultural Affairs Department's Cultural Grants Program, these annual fellowships support mid-career, L.A. artists in the creation of new work. This year's recipients include well respected artists **Judie Bamber**, **Erin Cosgrove**, **Joyce Dallal**, **Suzanne Lacy** and **Louise Sandahus**. Also showing at Bamsdall Park in the Project Room is new work by **Dana Maiden**, 'A Lamp is Put in Place of the Sun'. To 7/13. [www.culturela.org/press/index.html](http://www.culturela.org/press/index.html)

The strange, sometimes funny, sometimes disturbing nature of human vs. animal relations is the focus of film maker **Arlene Bogna's** first exhibition of color photographs at gallery 825. 6/21 to 7/18. [www.laaa.org](http://www.laaa.org)

New drawings, artists books and a drawing movie by SCWCA member **Joyce Cutler-Shaw**, produced during her artist residency at UC San Diego's School of Medicine, where she observes dissections are part of Anatomy Lesson XX. At UCSD La Jolla Campus, Main Lobby and West Hall. To 8/15.

London artist **Tomma Abts** shows 15 abstract, hard edge paintings made over the last ten years in her first United States solo museum exhibition at the Hammer. 7/27 to 11/2. [www.hammer.ucla.edu](http://www.hammer.ucla.edu)



Photo by Arlene Bogna at LAAC



#### About the SCWCA Updates

Please add [enews@scwca.org](mailto:enews@scwca.org) to your address book. If you can't see the images or links, click on 'Enable Links and Images' in AOL or 'Download pictures' in Outlook to enable those features.

**Join our mailing list!**

Join

email: [enews@scwca.org](mailto:enews@scwca.org)  
phone & fax: 323-222-2112  
web: <http://www.scwca.org>

**CREATE A LIVING FENCE** - When replacing yard fences, instead of building a wooden fence, opt for a living fence. A living fence is a hedge or row of trees, which can be groomed to maintain appearance. Not only is a living fence less expensive than a traditional fence, it also never needs to be painted. This saves you money and time and keeps harmful chemicals out of the environment. Try to use native flora and to avoid hedges comprised of only one species.

#### EcoArt Tips:

**RECYCLE YOUR NEWSPAPER** - There are 63 million newspapers printed each day in the U.S.; 44 million, or about 69 percent, of these will be thrown away. Recycling just the Sunday papers would save more than half a million trees every week.

Thanks to **Linda Lundell, founder of the EcoArt group** for sharing these tips that originated with Henry Porter of the Alliance For Sustainable Communities. Linda suggests doing a few at a time at a pace that works for you.

[More Tips online at scwca.org](http://www.scwca.org)

Southern California Womens Caucus for Art | 2100 N. Main St. #A-5 | Los Angeles | CA | 90031